

Hayes Primary School

1216

A single-storey extension to an existing primary school in Kenley, Croydon. A series of solid timber walls and roofs complete a brick and block extension, providing four new year classrooms, a school hall and a multi-purpose room.

SERVICES

supply and installation of timber superstructure
supply only timber furniture material

MATERIALS

crosslam. glulam
exposed timber finish throughout

INSTALLATION

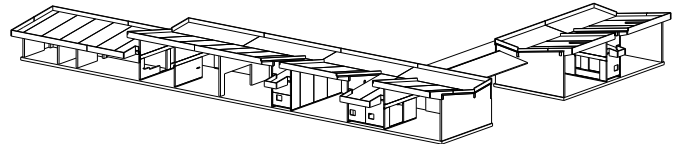
4 weeks

GIFA

603 m²

STORED CARBON

118 tonnes CO₂



CLIENT

London Borough of Croydon

ARCHITECT

Hayhurst and Co

TIMBER ENGINEER

Crafton

MAIN CONTRACTOR

Kier Wallis

PROJECT VALUE

£2.6 million

COMPLETION

2011

