

Four new 1 and 2-storey buildings, replacing 90% of the existing school. Each building provides the different departments with dedicated, flexible, open learning spaces. The classrooms radiate from generous forum stairwells which are used as teaching and social areas as well as circulation. Eurban worked closely with the contractor, the architect and their team of consultants, advising on interface details and exposed timber finishes. The college buildings are being developed as part of the BSF programme.

SERVICES

structural design of timber superstructure
supply and installation of timber superstructure
design, supply and installation of timber stairs
supply and installation of acoustic ceilings

MATERIALS

crosslam, glulam, cassettes
exposed timber finish throughout

INSTALLATION

block A, B & D: 26 weeks
block C: 10 weeks

GIFA

12,925m²

STORED CARBON

2,285 tonnes CO₂

CLIENT

Wokingham Borough Council

ARCHITECT

Sheppard Robson

TIMBER ENGINEER

CarbonEng

MAIN CONTRACTOR

Willmott Dixon

PROJECT VALUE

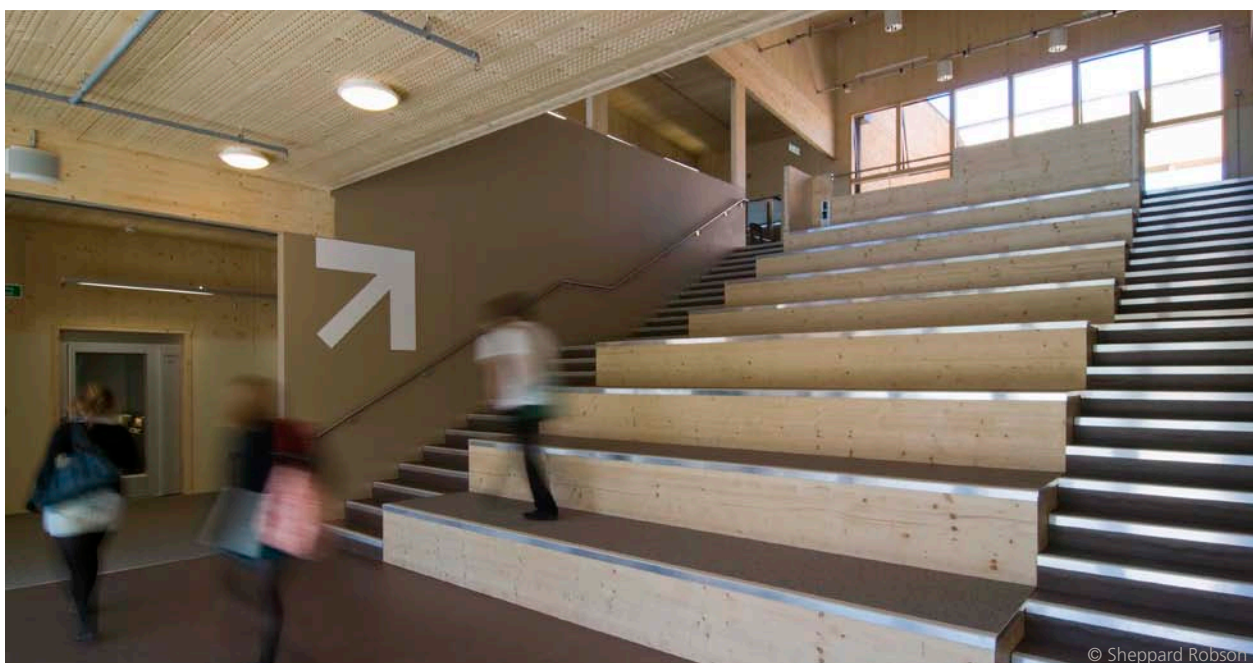
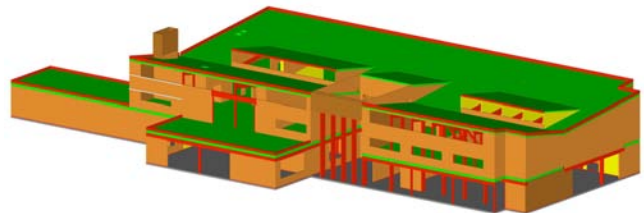
£28m

COMPLETION

2010

ENVIRONMENTAL RATING

BREEAM Very Good



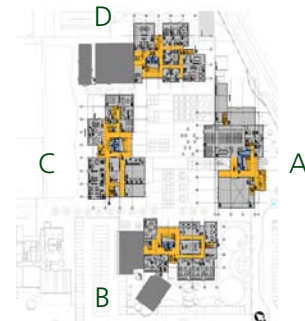
The open-plan design and theatre-like circulation spaces required acoustic attenuation. This was incorporated into the structural ceiling/floor cassettes that span 7.5m as well as providing an aesthetic finish. The engineered timber structure is able to achieve a series of column-free large communal spaces. Block A includes a large hall for assembly and performance that is 11m wide x 18m long and 9m high, within which the library is suspended at high level. Blocks B and D connect to existing buildings. With a tight site and phased construction, the existing college remained in use during the entire construction period. This was made possible by the speed of erection and relatively quiet installation of the timber panels compared with traditional building methods.

SERVICES

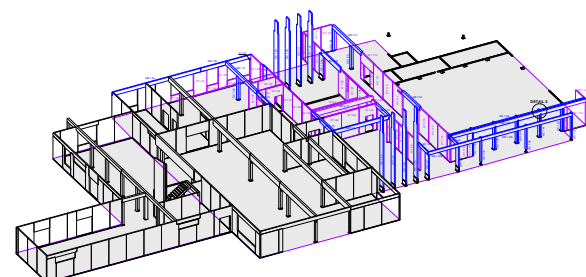
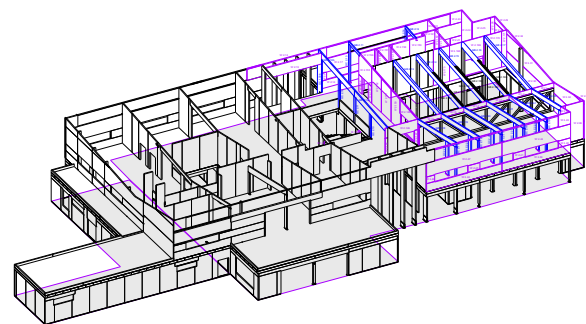
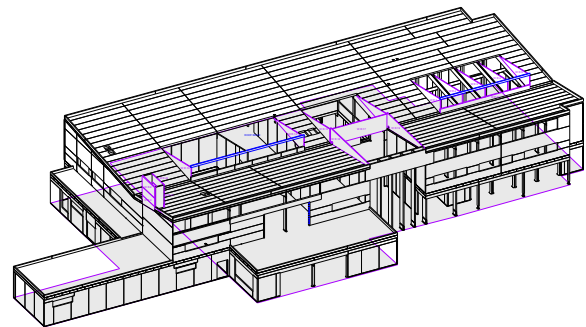
1. CarbonEng provided specialist timber engineering services and worked closely with Eurban who provided design co-ordination as part of the project team. CarbonEng expanded the service to include project specific detail design and building performance. This included system connection design to ensure the details delivered the specified airtightness, acoustic and fire performances. Eurban supplied and installed the timber superstructure and the windows and advised on timber finishes.

2. Product selection and material supply for component parts.

3. Complete on-site installation by a fully trained and directly employed team ensured an accurate and safe installation. Regular site visits from our design and engineering team checked for progress and quality.



plan of new college buildings



floor/ceiling cassette with acoustic absorption

order of installation for block A