

A three-storey new building accommodates the sixth form extension to the existing school building. The ability to crane into place solid timber panels made construction possible on a physically restricted site. Teaching in the school was able to continue undisturbed by the relatively quiet installation (compared with traditional construction methods).

SERVICES

structural design of timber superstructure
supply and installation of timber superstructure

MATERIALS

crosslam, glulam
exposed internal finishes

INSTALLATION

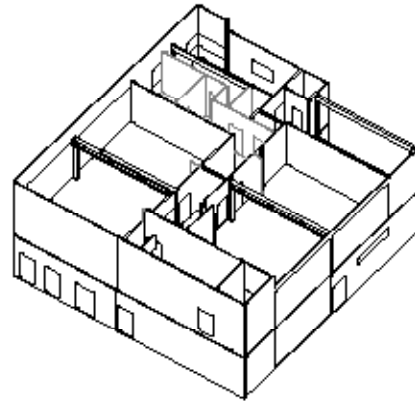
6 weeks

GIFA

800m²

STORED CARBON

182 tonnes CO₂



CLIENT

Reading Borough Council

ARCHITECT

Hampshire CC / Hunter and Partners

TIMBER ENGINEER

CarbonEng

MAIN CONTRACTOR

Willmott Dixon

PROJECT VALUE

£3.4m

COMPLETION

2009

ENVIRONMENTAL RATING

BREEAM Very Good

