

# St Agnes Primary School

0555

**A three-storey new building to replace the existing Victorian school building in the centre of Manchester.** The new scheme includes 9 classrooms and a large multi-purpose hall above which sits a roof-top playground. The rapid on-site construction brought significant programme benefits, thus reducing the time the school spent in temporary accommodation. At the time of construction this was the first British primary school to be built using engineered timber panels.

## SERVICES

structural design of timber superstructure  
supply and installation of timber superstructure  
design, supply and installation of stairs

## MATERIALS

crosslam, glulam  
exposed timber finish

## INSTALLATION

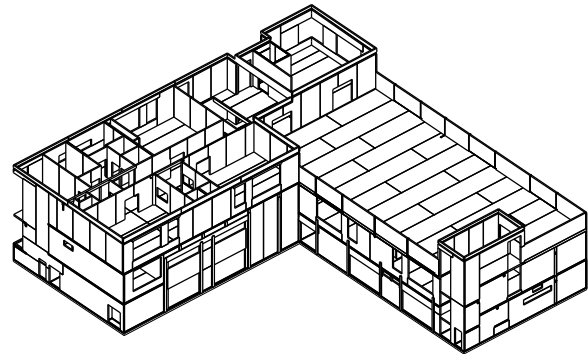
8 weeks

## GIFA

2,300m<sup>2</sup>

## STORED CARBON

623 tonnes CO<sub>2</sub>



## CLIENT

Manchester City Council

## ARCHITECT

Robinson Architects

## TIMBER ENGINEER

CarbonEng

## MAIN CONTRACTOR

Willmott Dixon

## PROJECT VALUE

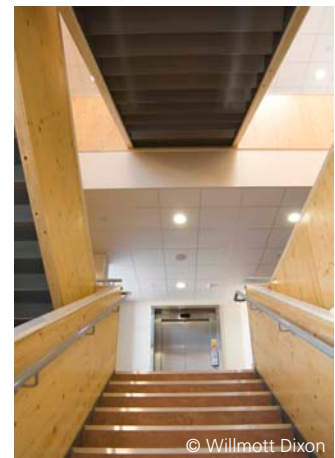
£6.2m

## COMPLETION

2008

## ENVIRONMENTAL RATING

BREEAM Very Good



© Willmott Dixon



© Willmott Dixon