

A new single-story community building situated in the playground of Grafton Primary School in Islington. The solid timber building, known as the 'Eco-Funnel', is used as an activities room for the school community. The folds and cantilevers that form the butterfly roof are designed without steelwork and with sufficient capacity to carry PV panels and to funnel rainwater into a recycling system that irrigates the community garden. The speed of construction allowed completion of the building during the school holidays.

SERVICES

structural design of timber superstructure
supply and installation of timber superstructure

MATERIALS

crosslam
exposed timber finish throughout

INSTALLATION

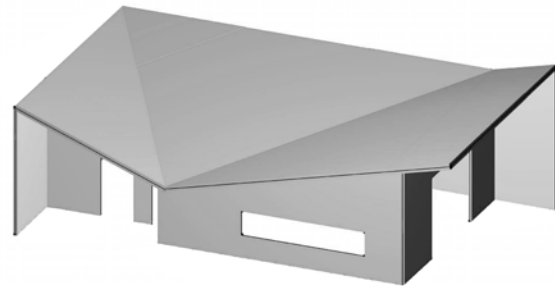
1 week

GIFA

91m²

STORED CARBON

35 tonnes CO₂



CLIENT

Islington Council

ARCHITECT

Charles Barclay

TIMBER ENGINEER

CarbonEng

MAIN CONTRACTOR

D C Woodruff

PROJECT VALUE

£280,000

COMPLETION

2007



© David Grandorge



© David Grandorge