

# Brandlehow Primary School

0080

**Construction of a single story extension to a Grade II listed primary school in residential South London.** The new classroom is linked by a glazed corridor to the existing building designed by Erno Goldfinger, built in 1952 and extended again in 1960s. It has a green roof, highly insulated walls and is naturally lit from above with large glazed doors opening onto the playground.

## SERVICES

structural design of timber superstructure  
supply and installation of timber superstructure  
supply and installation of timber facade and glazing

## MATERIALS

crosslam, glulam  
exposed timber finish throughout

## INSTALLATION

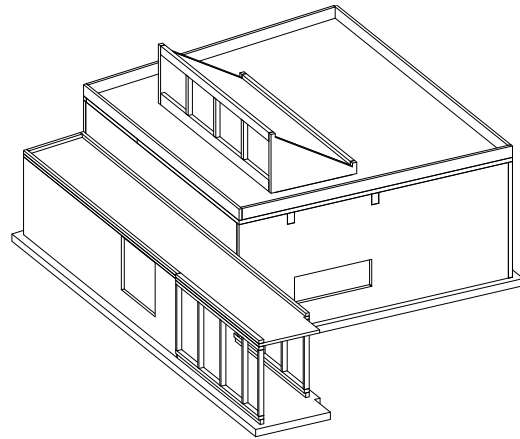
1 week

## GIFA

120m<sup>2</sup>

## STORED CARBON

23 tonnes CO<sub>2</sub>



## CLIENT

Wandsworth Borough Council

## ARCHITECT

Team 51.5°

## TIMBER ENGINEER

CarbonEng

## MAIN CONTRACTOR

Cuttle & McLeod

## PROJECT VALUE

£280,000

## COMPLETION

2006

