

# Berger Primary School

0824

**A new 2-storey building built in the grounds of the existing Berger Primary School in the London Borough of Hackney.** The new addition includes a nursery, community rooms, staff facilities, a double-height dining hall and 15 classrooms. The curved panels follow the turn of the stair in the main circulation space. It has been awarded a BREEAM Excellent rating, the first primary school in London to secure this rating. With a score of 74.26% it was the 4th highest rating ever awarded on an education project, at the time of certification.

## SERVICES

structural design of timber superstructure  
supply and installation of timber superstructure  
design, supply and installation of stairs

## MATERIALS

crosslam, glulam  
exposed internal finishes throughout

## INSTALLATION

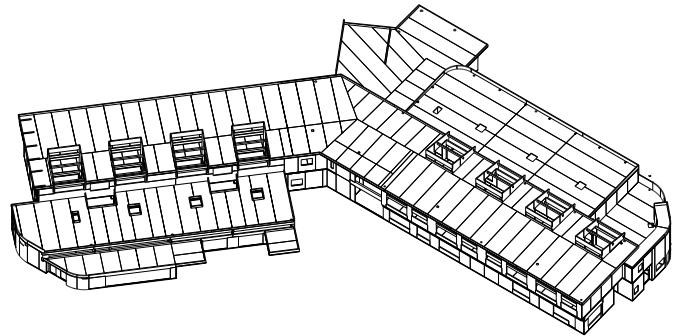
12 weeks

## GIFA

2,820m<sup>2</sup>

## STORED CARBON

624 tonnes CO<sub>2</sub>



## CLIENT

London Borough of Hackney

## ARCHITECT

Studio E Architects

## TIMBER ENGINEER

Eurban

## MAIN CONTRACTOR

Durkan

## PROJECT VALUE

£7m

## COMPLETION

2010

## ENVIRONMENTAL RATING

BREEAM Excellent



© Studio E Architects