

Bewbush Community Centre

0866

Addition of a single storey extension to existing health care buildings in Bewbush, Surrey. The development is the result of a partnering agreement between Crawley Borough Council, Crawley Primary Health Care Trust and Community Hospital and is part of a larger regeneration scheme. The new community centre fills the extents of the site and accommodates two sports halls, a gym, activity rooms, a cafe and dining facilities.

SERVICES

structural design of timber superstructure
supply and installation of timber superstructure

MATERIALS

crosslam, glulam, cassettes
exposed timber finish

INSTALLATION

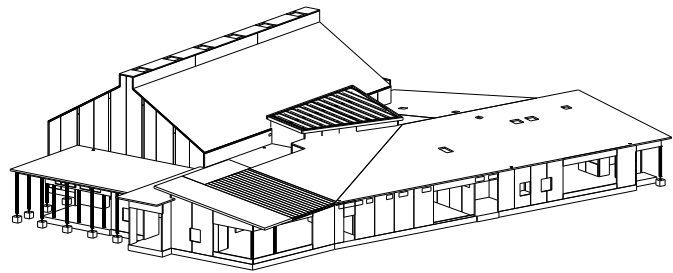
6 weeks

GIFA

1450m²

STORED CARBON

355 tonnes CO₂



CLIENT

Crawley Borough Council

ARCHITECT

S&P Architects

TIMBER ENGINEER

Eurban

MAIN CONTRACTOR

Willmott Dixon

PROJECT VALUE

£5.5m

COMPLETION

2010

ENVIRONMENTAL RATING

BREEAM Very Good

