

New student accommodation for St Catharine's College, University of Cambridge. Provision of twenty graduate rooms and two fellows' flats over 2-3 floors. Built during term time, the speed of erection and relatively quiet installation method (compared with traditional build) was a significant benefit to both the client and the architect.

SERVICES

structural design of timber superstructure
supply and installation of timber superstructure
design, supply and installation of timber stairs

MATERIALS

crosslam, glulam
exposed internal finishes throughout

INSTALLATION

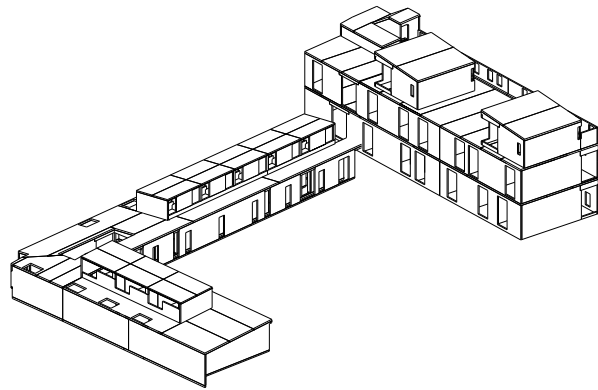
8 weeks

GIFA

780m²

STORED CARBON

230 tonnes CO₂



CLIENT

St Catharine's College

ARCHITECT

5th Studio

TIMBER ENGINEER

Eurban

MAIN CONTRACTOR

SDC Builders

PROJECT VALUE

£2.5m

COMPLETION

2009

