

Whittington Park

0748

A single-storey community building to accommodate team changing rooms for Whittington Park football pitch. The new building sits in the corner of the park and houses two 16-person changing rooms, a team training room, office, officials' facilities and storage. The centrally organised circulation is naturally lit by a skylight that runs the length of the building. The remaining pitched roof is planted as green roof.

SERVICES

structural design of timber superstructure
supply and installation of timber superstructure

MATERIALS

crosslam. glulam
exposed timber finish throughout

INSTALLATION

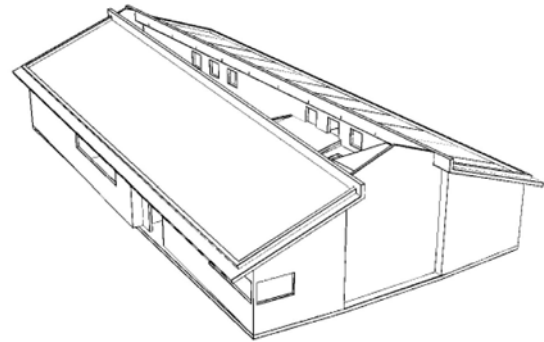
2 weeks

GIFA

250m²

STORED CARBON

77 tonnes CO₂



CLIENT

London Borough of Islington

ARCHITECT

Architects Network

TIMBER ENGINEER

Eurban

MAIN CONTRACTOR

CG Group

PROJECT VALUE

£875,000

COMPLETION

2010

