

# Queen Mary Innovation Centre

0417

**New academic offices and research space for Queen Mary Bio Enterprise in London.** The innovation centre provides excellent contemporary facilities, comprising laboratories and offices designed specifically for high technology companies operating in the Life Sciences sector. Eurban designed and installed a bespoke timber facade structure that enclosed the concrete-frame building. The glulam and cross laminated structure was installed in four weeks, allowing the cladding works to progress ahead of programme.

## SERVICES

structural design of timber superstructure  
supply and installation of timber superstructure

## MATERIALS

crosslam, glulam

## INSTALLATION

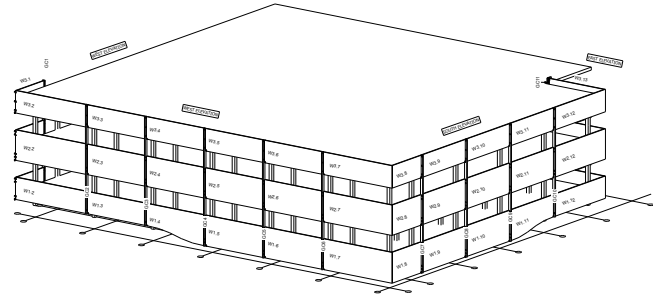
5 weeks

## GIFA

7,000m<sup>2</sup>

## STORED CARBON

44 tonnes CO<sub>2</sub>



## CLIENT

Queen Mary University / LDA

## ARCHITECT

NBBJ Ltd

## TIMBER ENGINEER

Eurban

## MAIN CONTRACTOR

Walter Lilly & Co Ltd

## PROJECT VALUE

£28m

## COMPLETION

2008

## ENVIRONMENTAL RATING

BREEAM Excellent

