

Brandlehow Primary School

0080

Construction of a single story extension to a Grade II listed primary school in residential South London. The new classroom is linked by a glazed corridor to the existing building designed by Erno Goldfinger, built in 1952 and extended again in 1960s. It has a green roof, highly insulated walls and is naturally lit from above with large glazed doors opening onto the playground.

SERVICES

structural design of timber superstructure
supply and installation of timber superstructure
supply and installation of timber facade and glazing

MATERIALS

crosslam, glulam
exposed timber finish throughout

INSTALLATION

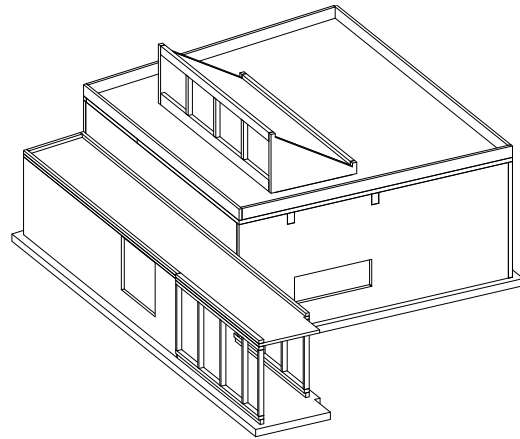
1 week

GIFA

120m²

STORED CARBON

23 tonnes CO₂



CLIENT

Wandsworth Borough Council

ARCHITECT

Team 51.5°

TIMBER ENGINEER

Eurban

MAIN CONTRACTOR

Cuttle & Mcloed

PROJECT VALUE

£280,000

COMPLETION

2006



© Don Barker



© Don Barker