

A timber tower designed as part of the extension to Caldicott School in Buckinghamshire, for their new performing arts building. The tower sits above the entrance hall to the new block and forms a powerful elevation to the new quad. The solid timber panels form the unusual geometry to the tower which accommodates the music practice rooms on the north-east corner of the building.

SERVICES

structural design of timber superstructure
supply of timber superstructure

MATERIALS

crosslam, steel

INSTALLATION

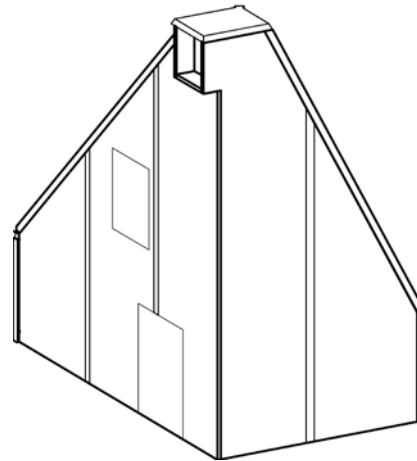
1 week

GIFA

65m²

STORED CARBON

22.5 tonnes CO₂



CLIENT

Caldicott Trust

ARCHITECT

Henley Halebrown Rorrison

TIMBER ENGINEER

Eurban

MAIN CONTRACTOR

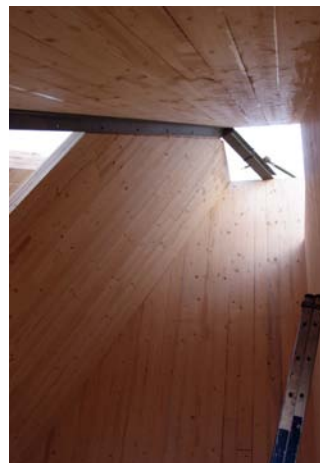
Benson Limited

PROJECT VALUE

£1.4m

COMPLETION

2003



©Henley Halebrown Rorrison