



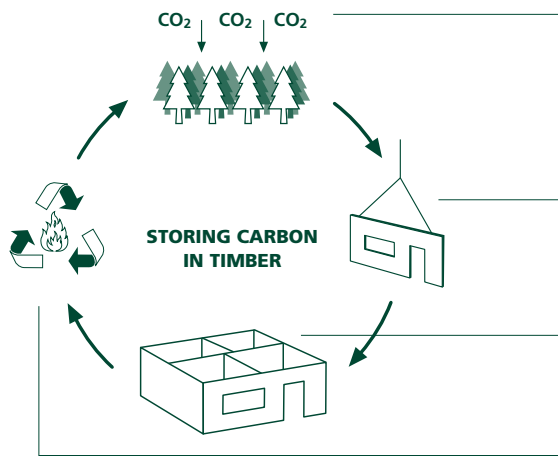
## **SOLID TIMBER SOLUTIONS** A BASIS FOR SUSTAINABLE BUILDING

## YOUR CARBON ASSET

### Increasing the environmental return on your investment

Carbon homes and carbon schools deliver a measurable environmental return in stored CO<sub>2</sub> that can be offset against emissions associated with the construction of new buildings.

A return on your investment that demonstrates a clear environmental contribution and a commitment to the UK's carbon reduction policies.



**CO<sub>2</sub>** — 50% of the world's independently certified forests are in Europe.

Sustainable forest management for timber production converts CO<sub>2</sub> from the atmosphere into building products.

**TIMBER** — Across its product lifecycle timber has the lowest energy consumption of any building material. Timber structures are carbon negative.

**STRUCTURE** — Timber acts as a carbon sink. A solid timber Carbon Home contains 30 – 40m<sup>3</sup> of timber, equivalent to approximately 32 tonnes of CO<sub>2</sub>.

**ENERGY** — Recover energy from timber. Recycling timber products into energy releases more stored energy than was used in the products production.

## Solid Timber

Timber is a high quality raw material that can be continuously and sustainably produced from well managed forests. The forest and timber industries engage with a natural cycle of raw material production and by increasing the use of timber products, we can make an active contribution to reducing our industries CO<sub>2</sub> emissions.

## Carbon Store

Timber offers a number of effective strategies for reducing emissions of CO<sub>2</sub>. Timber products require significantly less fossil energy than comparable products made from steel or concrete and therefore cut emissions. By building with solid timber it is possible to offset emissions resulting from the construction process and store carbon in timber for the life of the building.

- Trees convert CO<sub>2</sub> into solid carbon
- 1m<sup>3</sup> of timber as a substitute to brick or block will save approximately 0.8t of CO<sub>2</sub> emissions

## Solid Timber Construction

Structural systems made from solid timber offer a fast, accurate, and robust way to construct buildings.

- Bespoke manufacture of large wall, floor, and roof elements
- Fast, predictable on-site installation
- High thermal mass for improved internal environment
- Airtight building envelope

## Solid Timber Environments

Vapour permeable solid timber walls produce a more stable and comfortable indoor climate.

- Healthy living and learning environments
- Comfortable spaces made from natural materials are warm in winter and cool in summer
- Non-toxic safe materials for good indoor air quality

## Eurban Limited

Eurban Construction is a design led contractor specialising in the supply and installation of solid timber building structures. The services we offer to are tailored to help our clients deliver innovative and sustainable buildings.

- Project based advice from scheme design through to detail design
- Advice on appropriate material specification
- Full structural design service
- Complete on-site construction service
- Air-tightness and acoustic testing

For your complete solid timber building:

### Eurban Construction

Unit 2  
33 Waterson Street  
London E2 8HT

**T** +44 (0)20 7749 3929

**F** +44 (0)20 7749 3928

**E** info@eurban.co.uk